

The background of the image is a dark night sky filled with numerous small, bright stars. A vibrant green aurora borealis is visible in the lower right portion of the sky, appearing as a glowing, ethereal light. In the foreground, the dark silhouettes of trees and a horizon line are visible against the aurora. On the left side of the image, there is a faint, light-colored outline of the state of Alaska.

DeYoung
Electric LLC

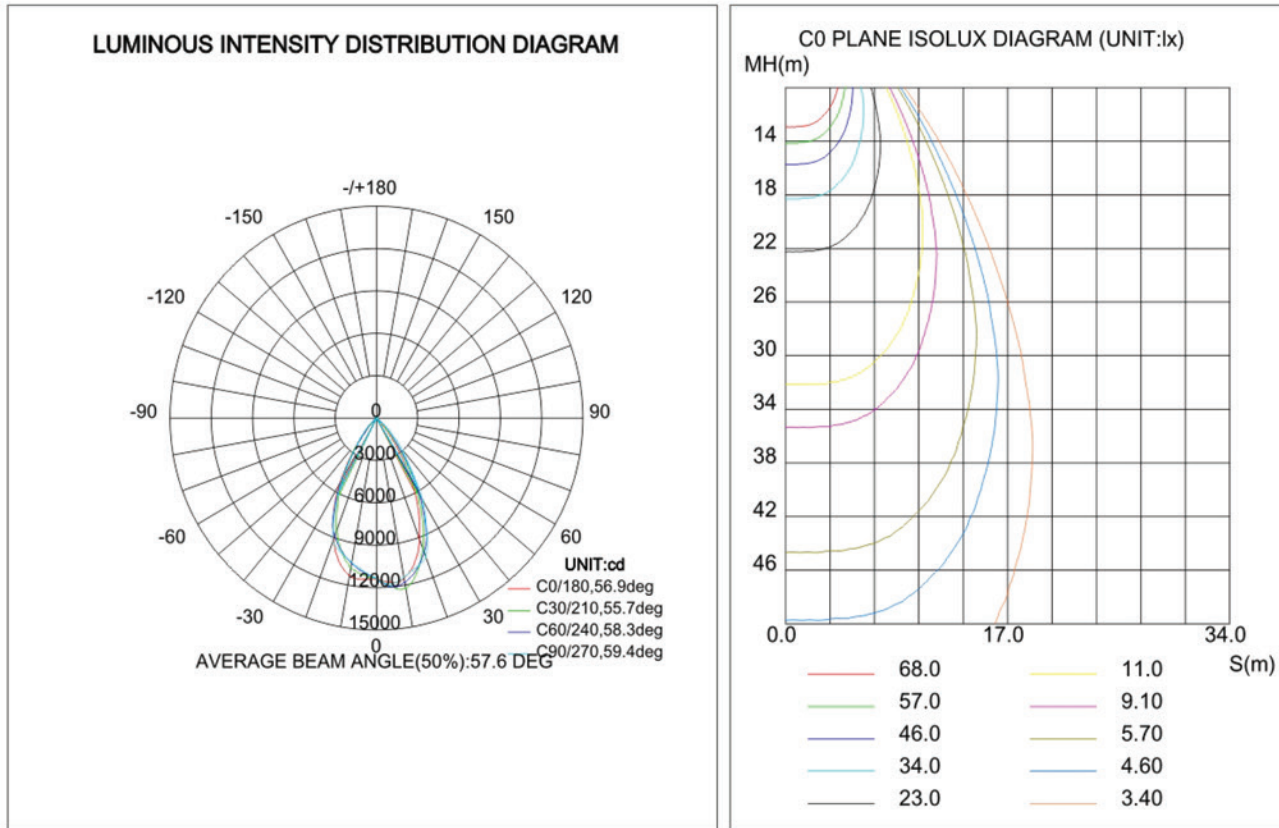
Module Flood Light



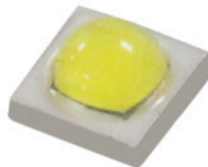
For purchase and optional installation, contact us at
www.DeYoungElectric.com



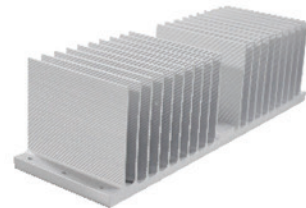
PHOTOMETRICS



Mean Well Driver



CREE XTE 1-5W>130LM/W



Speical Aluminum Heat fins

TECHNICAL SPECIFICATIONS

| Watts | Input Voltage | Mean Lumens | Size (L*W*H) | Net Weight |
|---------|---------------|---------------|-------------------------|------------|
| 150W | 100-277V | 15000-16500LM | 17.1 " x 14.4 " x 8.9 " | 282.0oZ |
| 150W-HV | 180-520V | 15000-16500LM | 17.1 " x 14.4 " x 8.9 " | 284.0oZ |
| 200W | 100-277V | 20000-22000LM | 21.3 " x 14.4 " x 8.9 " | 345.5oZ |
| 300W | 100-277V | 30000-33000LM | 29.5 " x 14.4 " x 8.9 " | 493.5oZ |

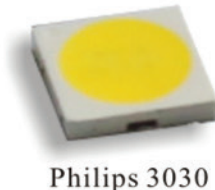
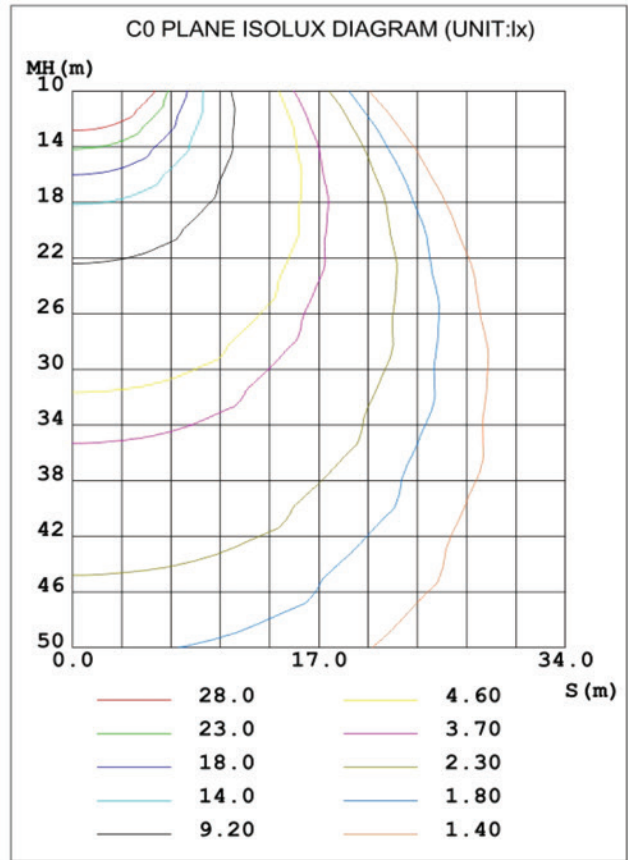
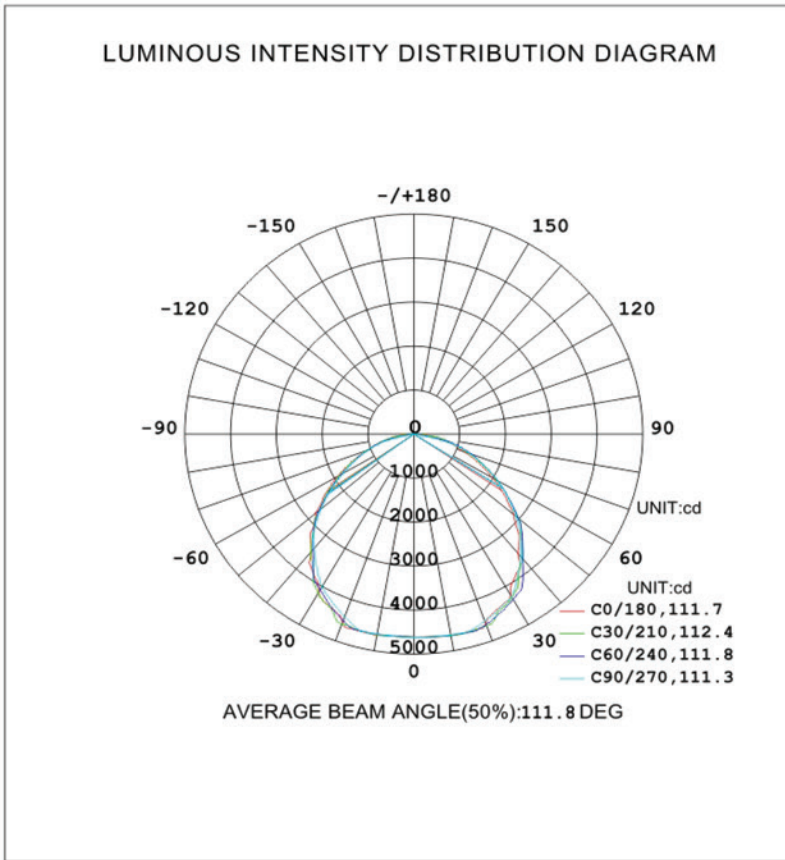
LED Gas Station



For purchase and optional installation, contact us at
www.DeYoungElectric.com



PHOTOMETRICS



TECHNICAL SPECIFICATIONS

| Watts | Input Voltage | Mean Lumens | Size (L*W*H) | Net Weight |
|-------|---------------|---------------|----------------------|------------|
| 100w | 100-277V | 10000-11500LM | 15.0" x 15.0" x 2.8" | 246.8oZ |
| 130w | 100-277V | 13000-14500LM | 15.0" x 15.0" x 2.8" | 257.3oZ |
| 150w | 100-277V | 15000-16500LM | 15.0" x 15.0" x 2.8" | 257.3oZ |

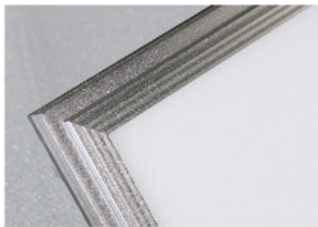
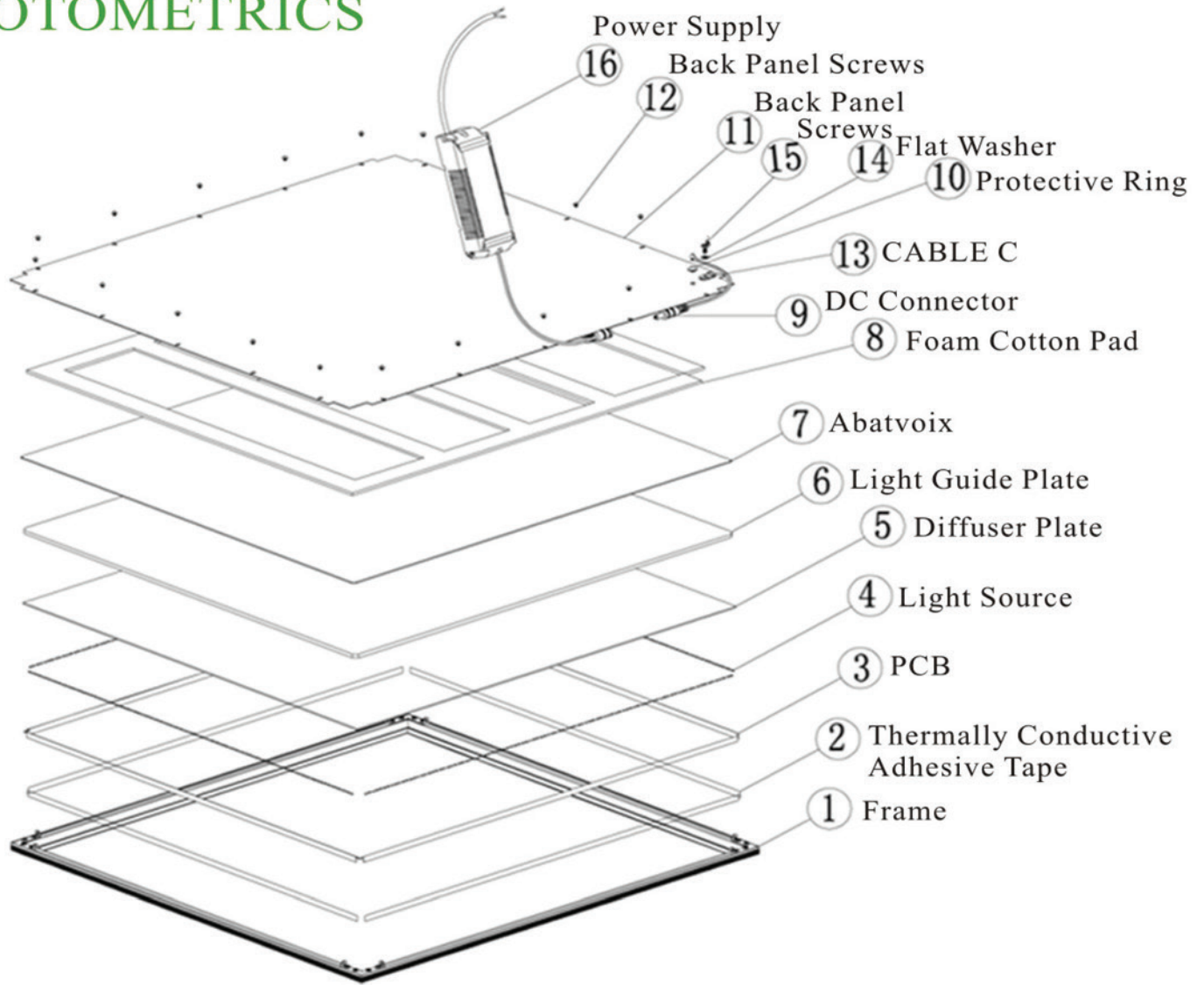
LED Panel Light



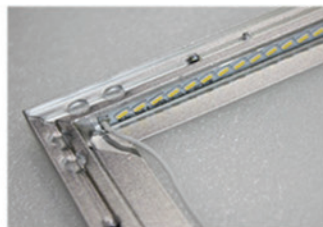
For purchase and optional installation, contact us at
www.DeYoungElectric.com



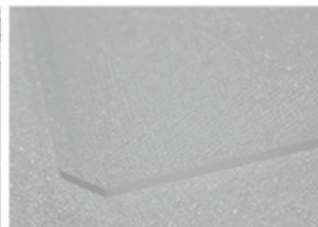
PHOTOMETRICS



aluminum frame



Epistar SMD Chip



(Mitsubishi)
light guide plate



UL driver

TECHNICAL SPECIFICATIONS

| Watts | Input Voltage | Mean Lumens | Size (L*W*H) | Net Weight |
|-------|---------------|-------------|--------------------|------------|
| 24W | 100-277V | 1800-1900LM | 11.9" x23.8" x0.4" | 81.1oZ |
| 40W | 100-277V | 3200-3400LM | 23.8" x23.8" x0.4" | 158.7oZ |
| 40W | 100-277V | 3200-3400LM | 11.9" x48.8" x0.4" | 158.7oZ |
| 45W | 100-277V | 3400-3800LM | 23.8" x23.8" x0.3" | 158.7oZ |
| 50W | 100-277V | 3800-4200LM | 23.8" x23.8" x0.3" | 158.7oZ |
| 50W | 100-277V | 4000-4300LM | 23.8" x48.8" x0.4" | 299.8oZ |
| 55W | 100-277V | 4300-4600LM | 23.8" x23.8" x0.3" | 158.7oZ |
| 72W | 100-277V | 5700-6100LM | 23.8" x48.8" x0.4" | 299.8oZ |

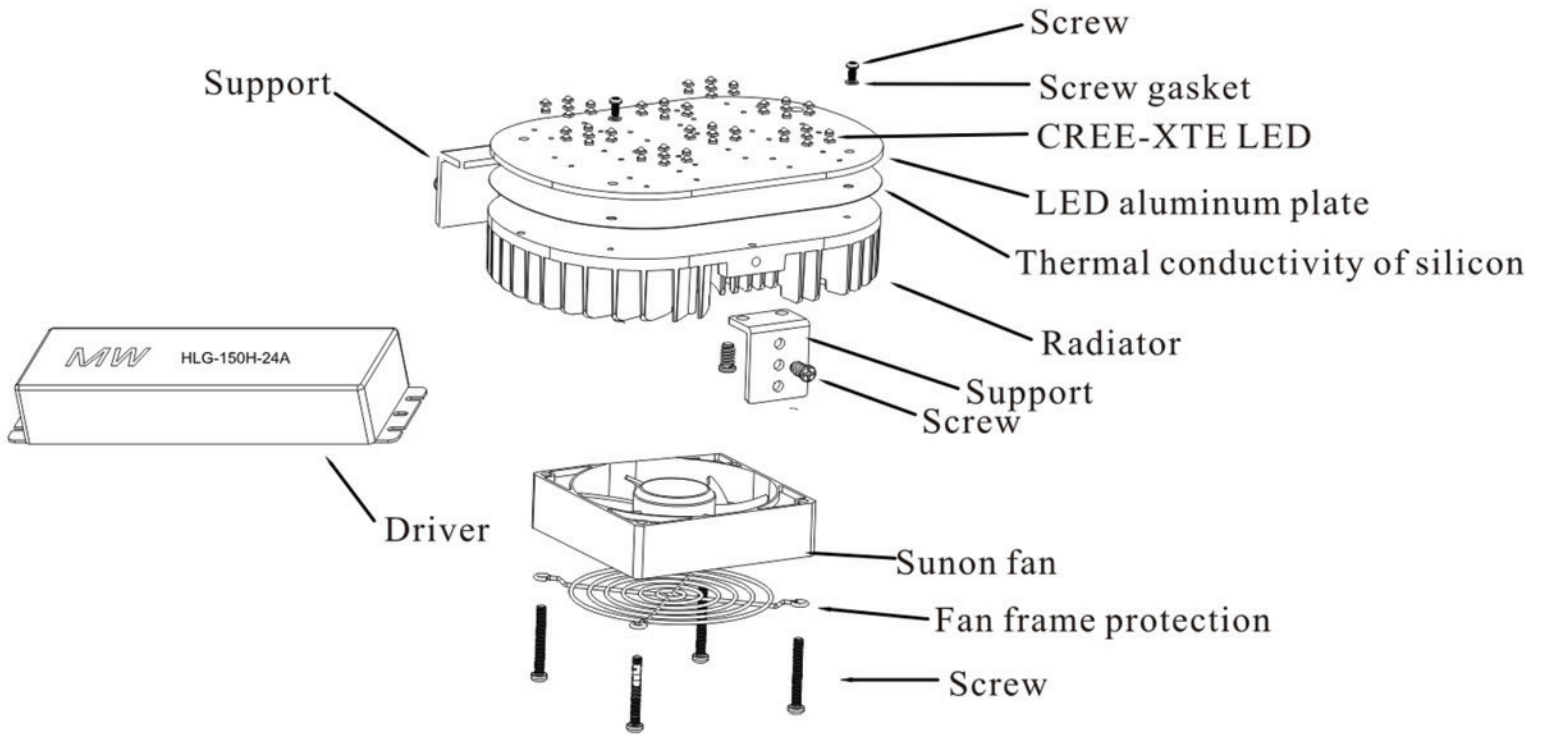
LED RETROFIT KIT



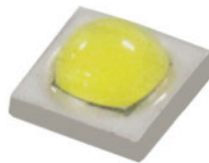
For purchase and optional installation, contact us at www.DeYoungElectric.com



PHOTOMETRICS



Sunon fan 60,000 Hour Rating Excellent
Maglev Power Fan



CREE XTE 1-5W>130LM/W

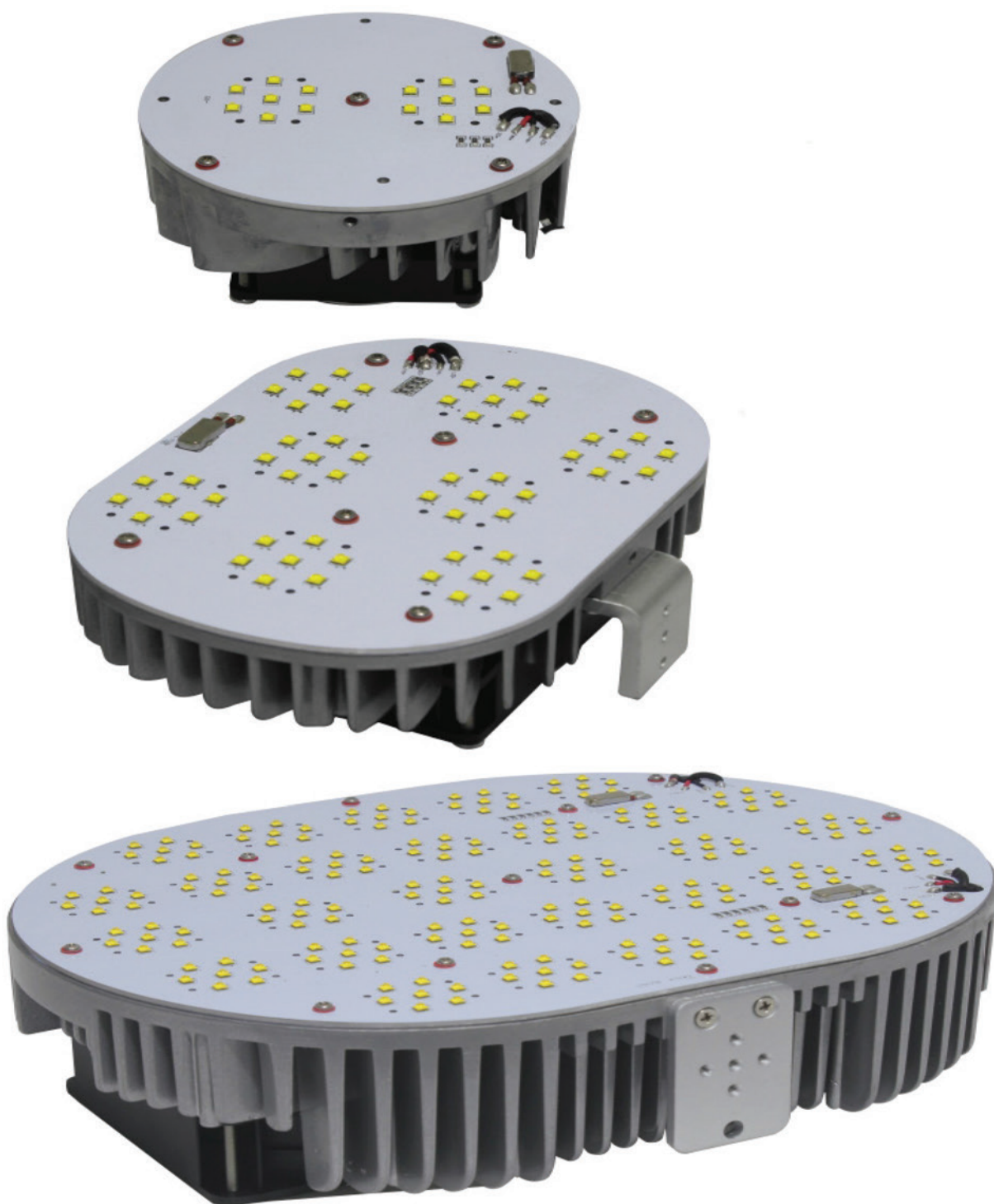


Aluminum Heat sink

TECHNICAL SPECIFICATIONS

| Watts | Input Voltage | Mean Lumens | Size (L*W*H) | Net Weight |
|-------|---------------|---------------|-----------------------------|------------|
| 60W | 100-277V | 6600-7200LM | (11.0-12.6) " x6.0 " x2.4 " | 56.4oZ |
| 80W | 100-277V | 8800-9600LM | (11.0-12.6) " x6.0 " x2.4 " | 56.4oZ |
| 100W | 100-277V | 11000-12000LM | (11.0-12.6) " x6.0 " x2.4 " | 74.0oZ |
| 120W | 100-277V | 13200-14400LM | (11.0-12.6) " x6.0 " x2.4 " | 74.0oZ |

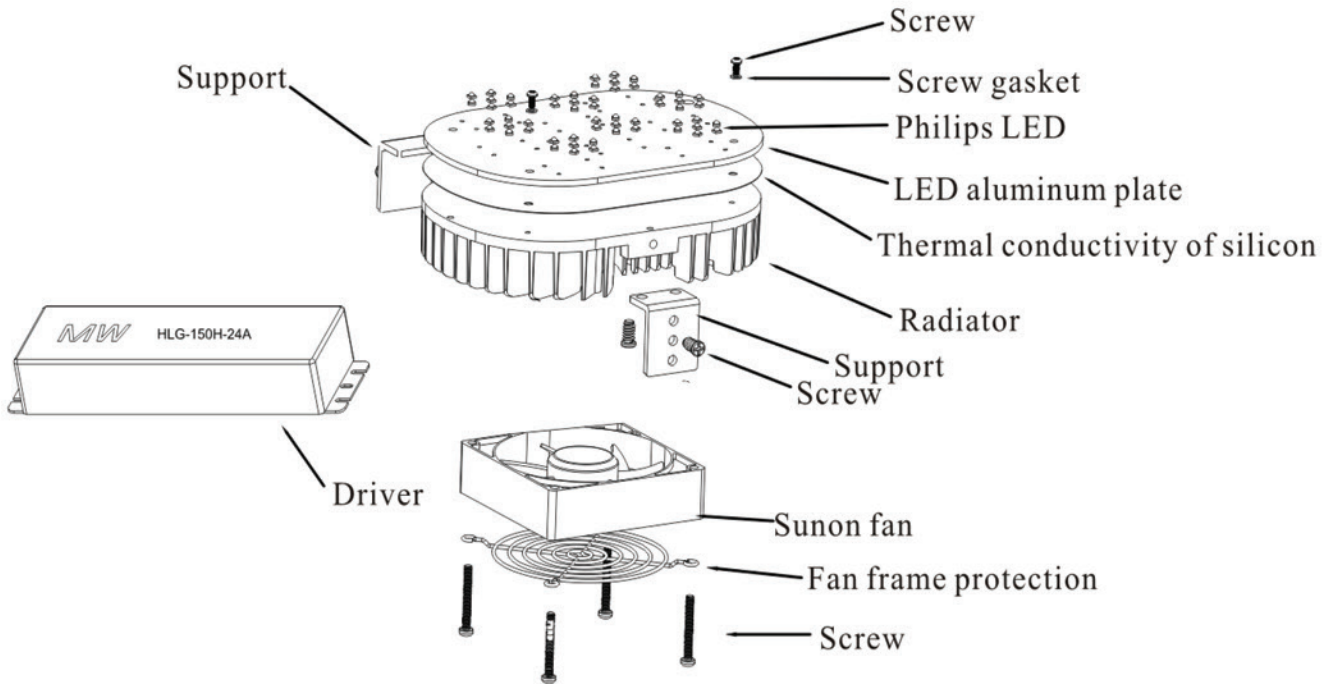
LED RETROFIT KIT



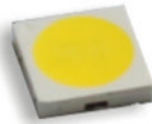
For purchase and optional installation, contact us at
www.DeYoungElectric.com



PHOTOMETRICS



Sunon fan 60,000 Hour Rating Excellent
Maglev Power Fan



Philips Led Chip



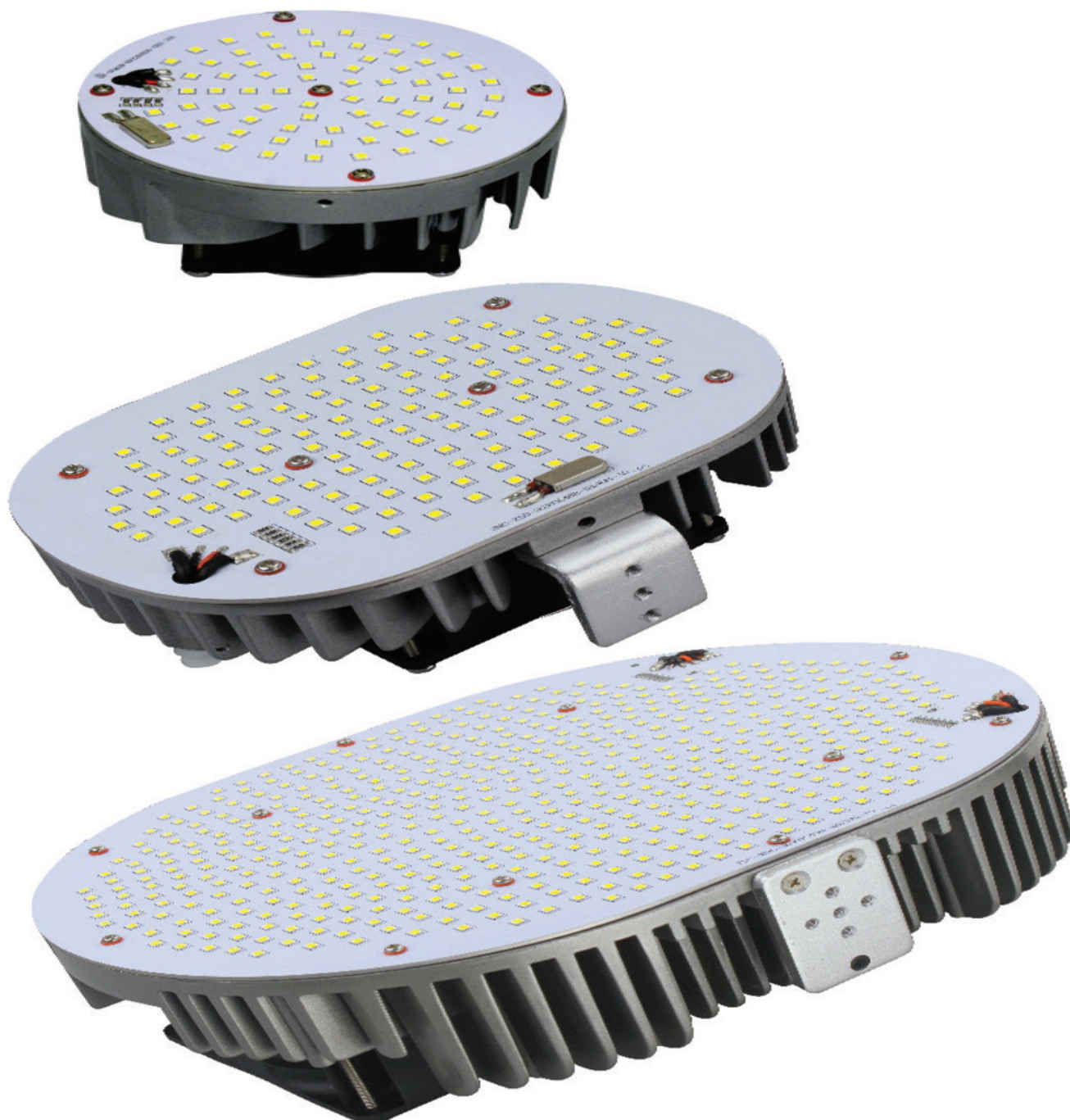
Aluminum Heat sink

TECHNICAL SPECIFICATIONS

| Watts | Input Voltage | Mean Lumens | Size (L*W*H) | Net Weight |
|---------|---------------|---------------|------------------------------|------------|
| 35W | 100-277V | 3850-4200LM | (8.1-8.9) " x5.0 " x3.3 " | 51.1oZ |
| 45W | 100-277V | 4950-5400LM | (8.1-8.9) " x5.0 " x3.3 " | 52.2oZ |
| 60W | 100-277V | 6600-7200LM | (10.0-11.6) " x6.0 " x2.4 " | 55.7oZ |
| 65W | 100-277V | 7150-7800LM | (8.1-8.9) " x5.0 " x3.3 " | 63.5oZ |
| 80W | 100-277V | 8800-9600LM | (10.0-11.6) " x6.0 " x2.4 " | 68.7oZ |
| 80W-HV | 180-520V | 8800-9600LM | (10.0-11.6) " x6.0 " x2.4 " | 81.1oZ |
| 105W | 100-277V | 11550-12600LM | (10.0-11.6) " x6.0 " x2.4 " | 79.3oZ |
| 105W-HV | 180-520V | 11550-12600LM | (10.0-11.6) " x6.0 " x2.4 " | 82.8oZ |
| 120W | 100-277V | 13200-14400LM | (10.0-11.6) " x6.0 " x2.4 " | 80.4oZ |
| 120W-HV | 180-520V | 13200-14400LM | (10.0-11.6) " x6.0 " x2.4 " | 83.9oZ |
| 150W | 100-277V | 16500-18000LM | (13.8-14.6) " x7.2 " x2.8 " | 126.9oZ |
| 150W-HV | 180-520V | 16500-18000LM | (13.8-14.6) " x7.2 " x2.8 " | 130.4oZ |
| 200W | 100-277V | 22000-24000LM | (13.8-14.6) " x7.2 " x3.3 " | 134.0oZ |
| 240W-HV | 180-520V | 26400-28800LM | (13.8-14.6) " x7.2 " x3.3 " | 176.3oZ |
| 320W | 100-277V | 35200-38400LM | (16.1-18.1) " x10.2 " x3.1 " | 253.8oZ |
| 400W | 100-277V | 44000-48000LM | (16.1-18.1) " x10.2 " x3.5 " | 282.0oZ |
| 400W-HV | 180-520V | 44000-48000LM | (16.1-18.1) " x10.2 " x3.5 " | 324.3oZ |

LED RETROFIT KIT

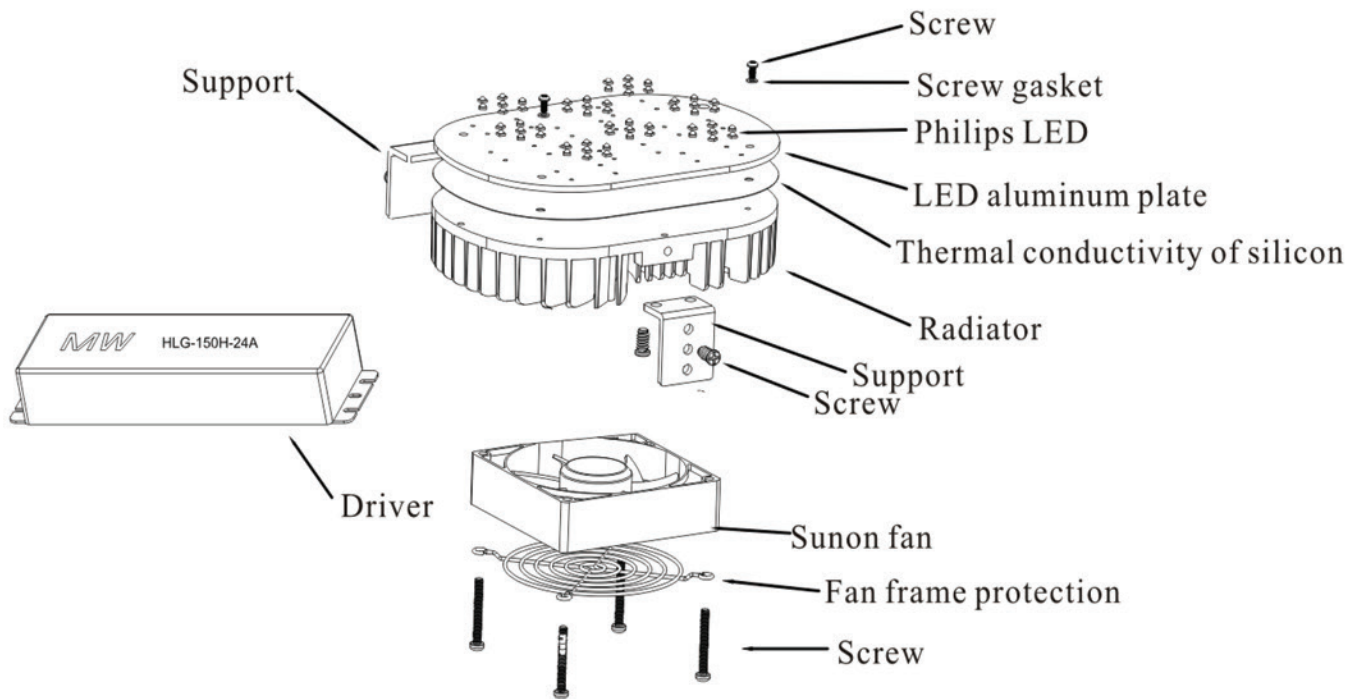
Dimmable



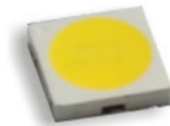
For purchase and optional installation, contact us at
www.DeYoungElectric.com



PHOTOMETRICS



Sunon fan 60,000 Hour Rating Excellent
Maglev Power Fan



Philips Led Chip



Aluminum Heat sink

TECHNICAL SPECIFICATIONS

| Watts | Input Voltage | Mean Lumens | Size (L*W*H) | Net Weight |
|----------|---------------|---------------|------------------------------------|------------|
| 60W | 180-520V | 6600-8100LM | (7.1-8.2) " x5.2 " x5.1 " | 52.9oZ |
| 80W | 100-277V | 8800-10000LM | (9.2-11.2) " x6.3 " x(5.1-6.3) " | 67.0oZ |
| 100W | 100-277V | 11000-13000LM | (9.2-11.2) " x6.3 " x(5.1-6.3) " | 81.1oZ |
| 100W-Dim | 100-277V | 11000-13000LM | (9.2-11.2) " x6.3 " x(5.1-6.3) " | 81.1oZ |
| 120W | 100-277V | 13200-15000LM | (9.2-11.2) " x6.3 " x(5.1-6.3) " | 84.7oZ |
| 120W-Dim | 100-277V | 13200-15000LM | (9.2-11.2) " x6.3 " x(5.1-6.3) " | 84.7oZ |
| 150W | 100-277V | 16500-19000LM | (12.7-13.9) " x7.3 " x(5.1-6.3) " | 130.5oZ |
| 150W-Dim | 100-277V | 16500-19000LM | (12.7-13.9) " x7.3 " x(5.1-6.3) " | 130.5oZ |
| 200W-Dim | 100-277V | 22000-26000LM | (12.7-13.9) " x7.3 " x(5.1-6.3) " | 134.0oZ |
| 240W-Dim | 100-277V | 26400-31000LM | (12.7-13.9) " x7.3 " x(5.1-6.3) " | 134.0oZ |
| 300W-Dim | 100-277V | 33000-39000LM | (14.9-17.5) " x10.2 " x(5.1-6.3) " | 257.5oZ |
| 300W-Dim | 180-520V | 33000-39000LM | (14.9-17.5) " x10.2 " x(5.1-6.3) " | 257.5oZ |
| 400W-Dim | 100-277V | 44000-50000LM | (14.9-17.5) " x10.2 " x(5.1-6.3) " | 282.2oZ |
| 480W-Dim | 100-277V | 52800-62000LM | (14.9-17.5) " x10.2 " x(5.1-6.3) " | 282.2oZ |

RKC Corn Light

Inductive/Electronic ballast Compatible



For purchase and optional installation, contact us at
www.DeYoungElectric.com



PHOTOMETRICS



Sunon fan 60,000 Hour Rating Excellent
Maglev Power Fan

Epistar 2835 Chip >130LM/W

Speical Aluminum Heat fins

TECHNICAL SPECIFICATIONS

| Watts | Input Voltage | Mean Lumens | Size (H*D) | Net Weight |
|-------|---------------|---------------|-------------|------------|
| 30W | 100-277V | 3300-3600LM | 8.5" x3.5" | 14.82oz |
| 40W | 100-277V | 4400-4800LM | 9.3" x3.5" | 15.52oz |
| 60W | 100-277V | 6600-7200LM | 10.5" x3.5" | 18.70oz |
| 80W | 100-277V | 8800-9600LM | 10.2" x4.4" | 23.28oz |
| 100W | 100-277V | 11000-12000LM | 10.6" x4.4" | 24.34oz |
| 120W | 100-277V | 13200-14400LM | 11.0" x4.4" | 26.81oz |

RKC Corn Light

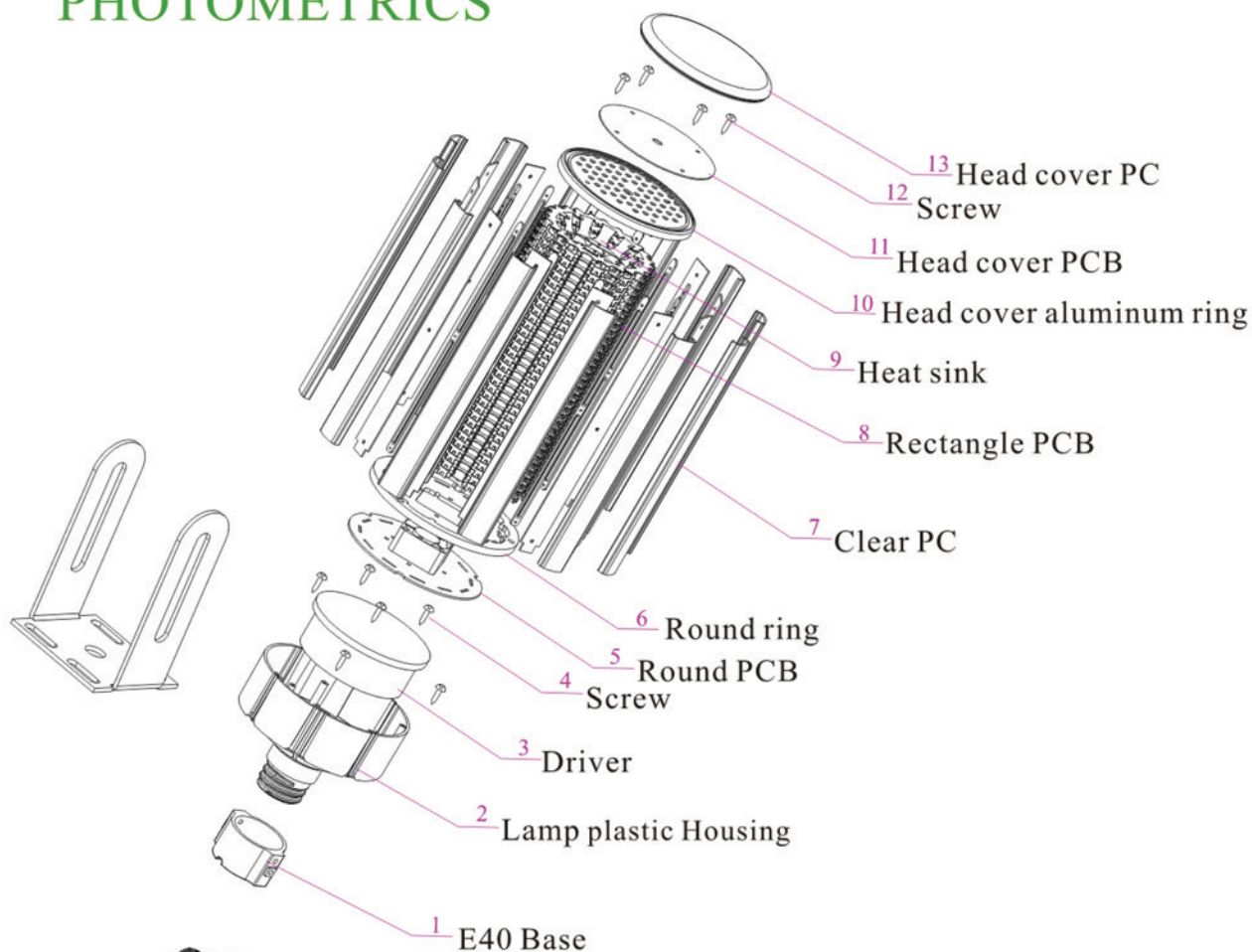
Inductive/Electronic ballast Compatible



For purchase and optional installation, contact us at
www.DeYoungElectric.com



PHOTOMETRICS



Sunon fan 60,000 Hour Rating Excellent
Maglev Power Fan



Epistar 2835 Chip >130LM/W



Speical Aluminum Heat fins

TECHNICAL SPECIFICATIONS

| Watts | Input Voltage | Mean Lumens | Size (H*D) | Net Weight |
|---------|---------------|---------------|---------------|------------|
| 30W | 100-277V | 3300-3600LM | 9.3 " x3.7 " | 18.34oZ |
| 40W | 100-277V | 4400-4800LM | 10.6 " x3.7 " | 20.46oZ |
| 60W | 100-277V | 6600-7200LM | 11.5 " x3.7 " | 22.22oZ |
| 80W | 100-277V | 8800-9600LM | 10.9 " x4.9 " | 39.51oZ |
| 100W | 100-277V | 11000-12000LM | 11.7 " x4.9 " | 41.27oZ |
| 120W | 100-277V | 13200-14400LM | 12.4 " x4.9 " | 45.50oZ |
| 150W | 100-277V | 16500-18000LM | 13.5 " x4.9 " | 49.38oZ |
| 100W-ED | 100-277V | 11000-12000LM | 11.7 " x4.9 " | 31.39oZ |
| 120W-ED | 100-277V | 13200-14400LM | 12.4 " x4.9 " | 33.86oZ |
| 150W-ED | 100-277V | 16500-18000LM | 13.5 " x4.9 " | 36.33oZ |
| 200W-ED | 100-277V | 22000-24000LM | 15.5 " x4.9 " | 43.03oZ |
| 120W-HV | 180-520V | 16500-18000LM | 13.5 " x4.9 " | 36.33oZ |
| 200W-HV | 180-520V | 22000-24000LM | 15.5 " x4.9 " | 43.03oZ |

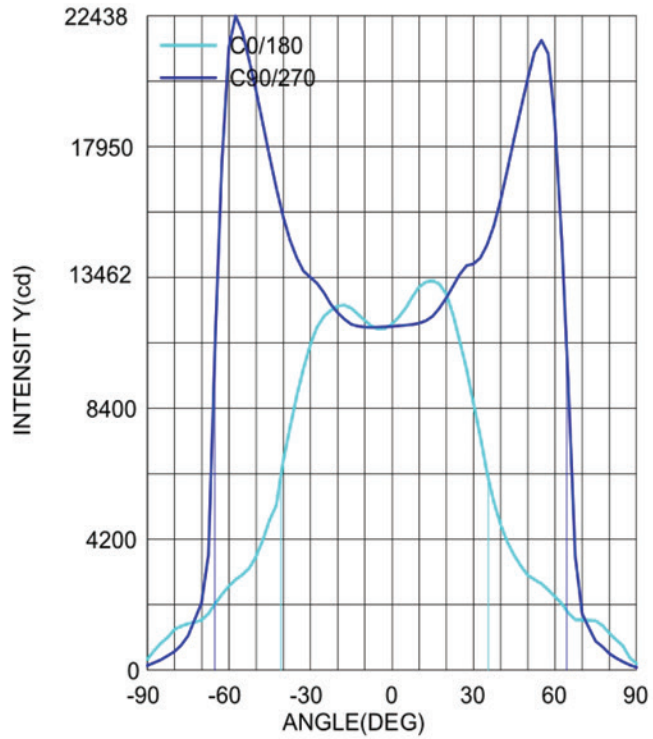
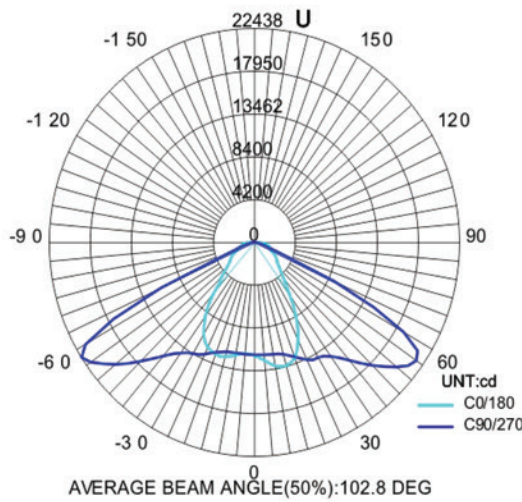
LED Shoebox Light



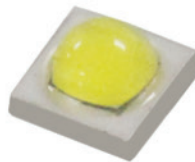
For purchase and optional installation, contact us at
www.DeYoungElectric.com



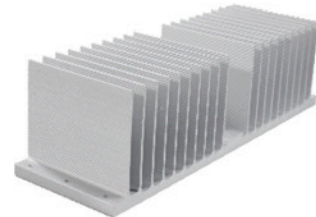
PHOTOMETRICS



Mean Well Driver



CREE XTE 1-5W>130LM/W



Speical Aluminum Heat fins

TECHNICAL SPECIFICATIONS

| Watts | Input Voltage | Mean Lumens | Size (L*W*H) | Net Weight |
|---------|---------------|---------------|------------------------|------------|
| 120W | 100-277V | 10800-12000LM | 23.6 " x17.1 " x7.1 " | 416.4oZ |
| 150W | 100-277V | 13500-15000LM | 23.6 " x17.1 " x7.1 " | 419.9oZ |
| 150W-HV | 180-520V | 13500-15000LM | 23.6 " x17.1 " x7.1 " | 419.9oZ |
| 200W | 100-277V | 18000-20000LM | 23.6 " x17.1 " x7.1 " | 458.7oZ |
| 200W-HV | 180-520V | 18000-20000LM | 23.6 " x17.1 " x7.1 " | 458.7oZ |
| 320W | 100-277V | 28800-32000LM | 29.5 " x23.6 " x10.2 " | 1012.7oZ |
| 320W-HV | 180-520V | 28800-32000LM | 29.5 " x23.6 " x10.2 " | 1012.7oZ |
| 400W | 100-277V | 38000-42000LM | 29.5 " x23.6 " x10.2 " | 1016.2oZ |
| 400W-HV | 180-520V | 38000-42000LM | 29.5 " x23.6 " x10.2 " | 1016.2oZ |

UL2835 Corn Light

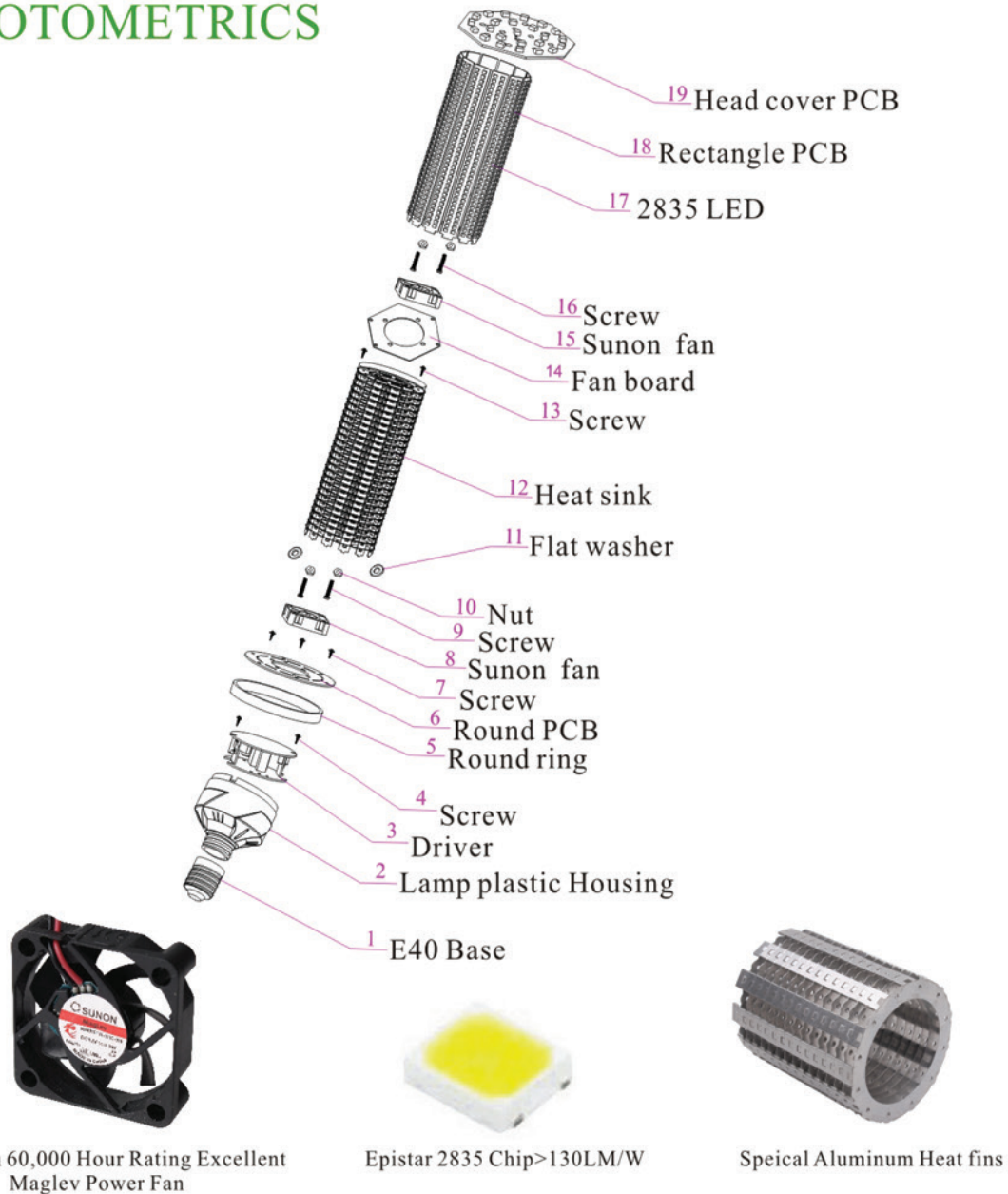
Inductive/Electronic ballast Compatible



For purchase and optional installation, contact us at
www.DeYoungElectric.com



PHOTOMETRICS



TECHNICAL SPECIFICATIONS

| Watts | Input Voltage | Mean Lumens | Size (H*D) | Net Weight |
|-------|---------------|---------------|-------------------|------------|
| 20W | 100-277V | 2100-2400LM | 2.8 " 5.9 " | 5.3oZ |
| 30W | 100-277V | 3150-3600LM | 3.5 " x7.7/8.3 " | 14.1oZ |
| 40W | 100-277V | 4200-4800LM | 3.5 " x8.5/9.1 " | 15.8oZ |
| 60W | 100-277V | 6300-7200LM | 3.5 " x9.6/10.2 " | 17.6oZ |
| 80W | 100-277V | 8400-9600LM | 4.4 " x10 " | 22.9oZ |
| 100W | 100-277V | 10500-12000LM | 4.4 " x10.4 " | 24.7oZ |
| 120W | 100-277V | 12600-14400LM | 4.4 " x10.8 " | 26.5oZ |

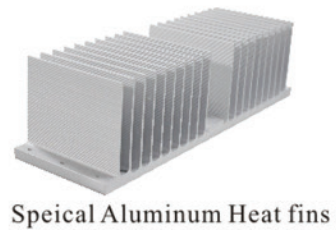
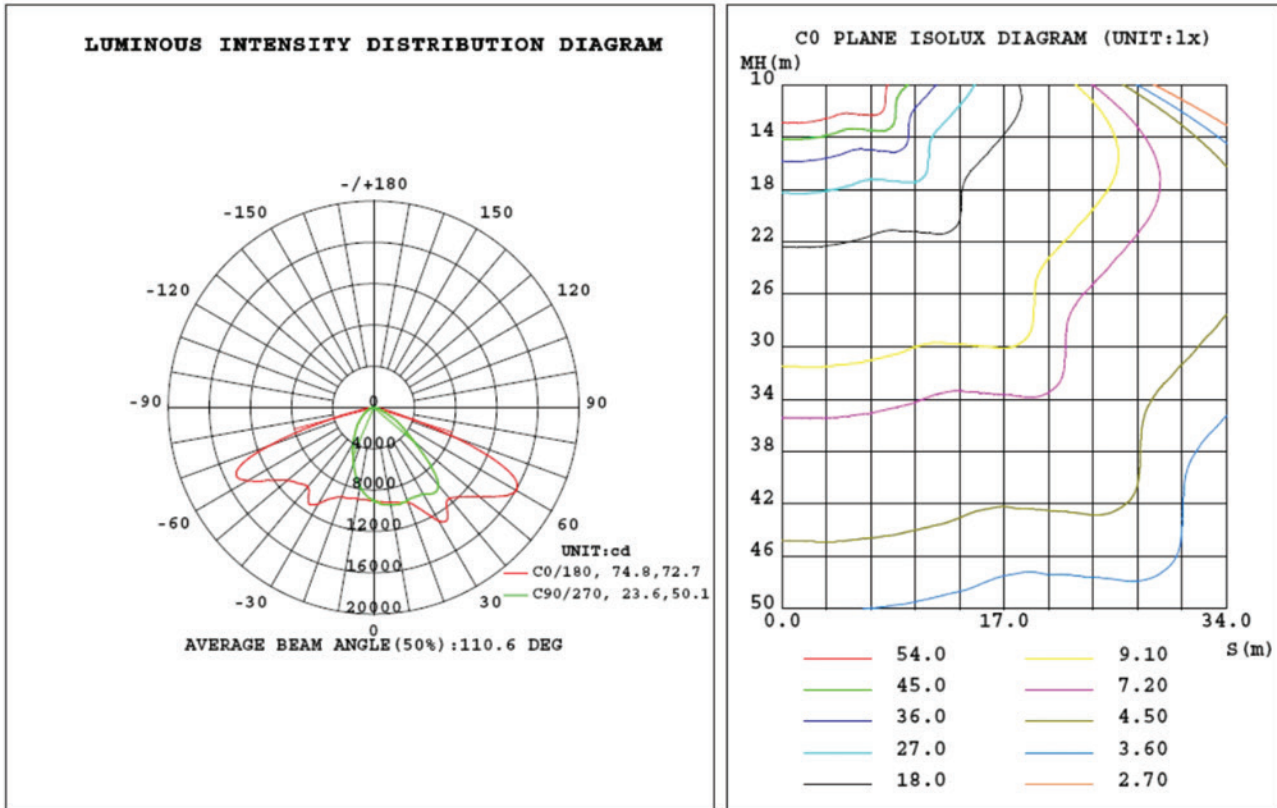
LED Street Light



For purchase and optional installation, contact us at
www.DeYoungElectric.com



PHOTOMETRICS



TECHNICAL SPECIFICATIONS

| Watts | Input Voltage | Mean Lumens | Size (L*W*H) | Net Weight |
|-------|---------------|---------------|-------------------------|------------|
| 100w | 100-277V | 10500-12000LM | 23.6 " x 14.4 " x 3.9 " | 292.7oZ |
| 150w | 100-277V | 15500-18000LM | 27.7 " x 14.4 " x 3.9 " | 328.0oZ |
| 180w | 100-277V | 19000-22000LM | 31.9 " x 14.4 " x 3.9 " | 388.0oZ |
| 240w | 100-277V | 25000-29000LM | 31.9 " x 14.4 " x 3.9 " | 444.4oZ |
| 300w | 100-277V | 31000-36000LM | 40.1 " x 14.4 " x 3.9 " | 511.4oZ |

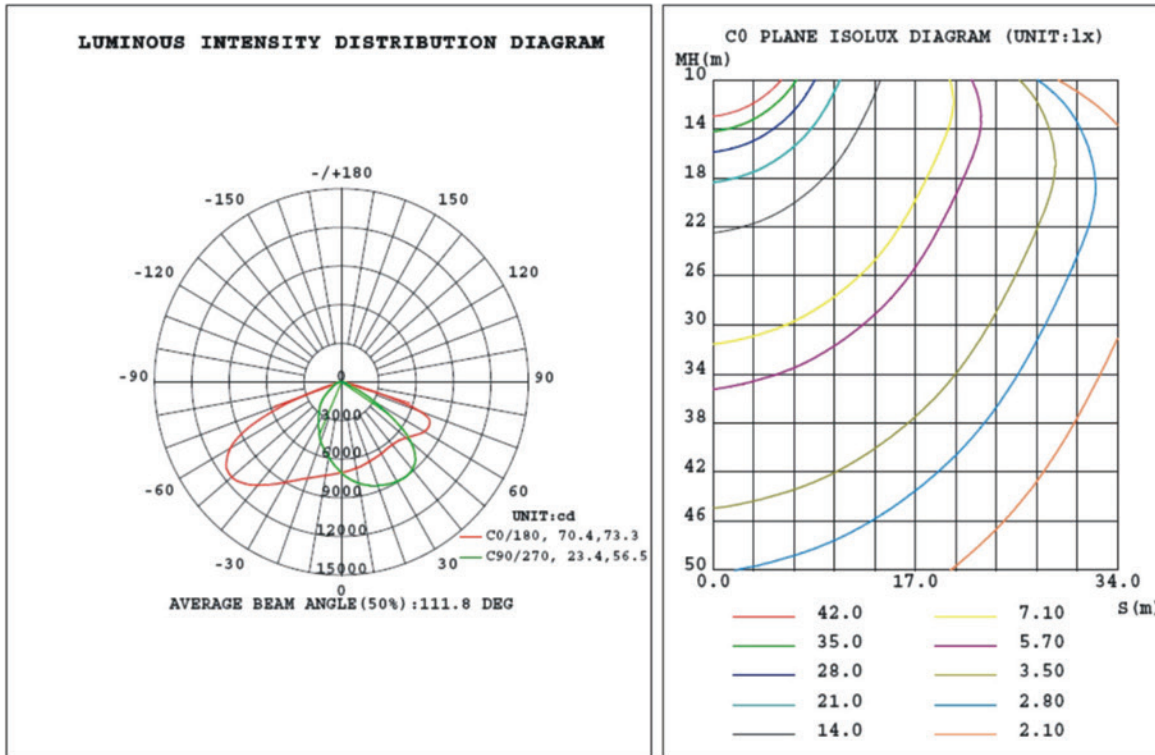
LED Street Light



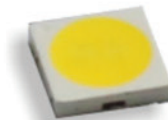
For purchase and optional installation, contact us at
www.DeYoungElectric.com



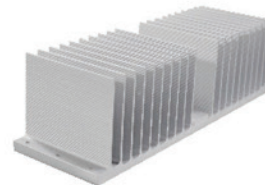
PHOTOMETRICS



Mean Well Driver



Philips 3030



Special Aluminum Heat fins

TECHNICAL SPECIFICATIONS

| Watts | Input Voltage | Mean Lumens | Size (L*W*H) | Net Weight |
|-------|---------------|---------------|-------------------------|------------|
| 60w | 100-277V | 6300-7200LM | 19.5 " x 14.4 " x 3.9 " | 254.0oZ |
| 120w | 100-277V | 13000-14500LM | 23.6 " x 14.4 " x 3.9 " | 292.7oZ |
| 180w | 100-277V | 19000-22000LM | 27.7 " x 14.4 " x 3.9 " | 328.0oZ |
| 240w | 100-277V | 25000-29000LM | 31.9 " x 14.4 " x 3.9 " | 388.0oZ |

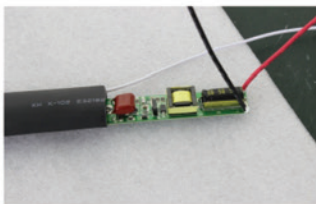
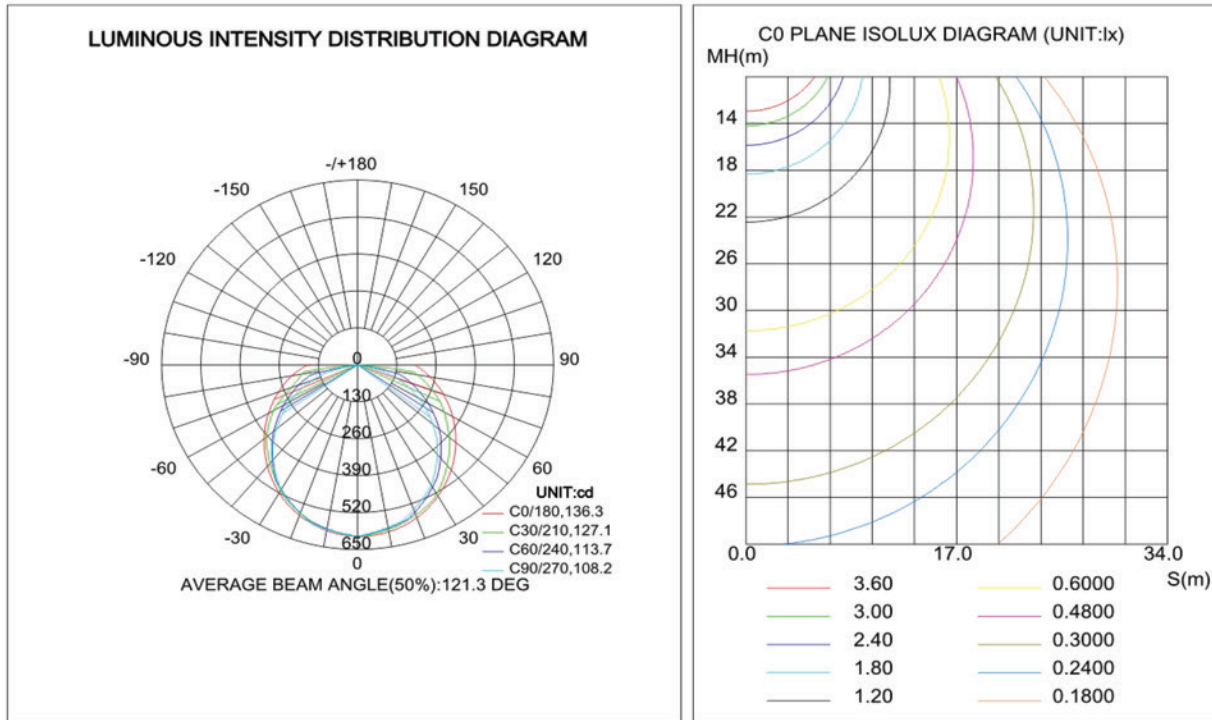
LED Tube Light



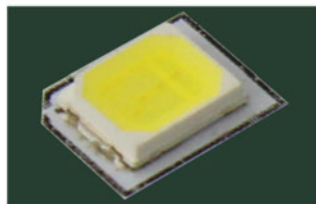
For purchase and optional installation, contact us at www.DeYoungElectric.com



PHOTOMETRICS



Driver



Epistar SMD2835



internal structure

TECHNICAL SPECIFICATIONS

| Watts | Input Voltage | Mean Lumens | Size (D*L) | Net Weight |
|---------|---------------|-------------|----------------|------------|
| 7W | 100-277V | 805-910LM | D1.0 " x17.6 " | 8.5oZ |
| 10W | 100-277V | 1150-1300LM | D1.0 " x23.8 " | 8.5oZ |
| 14W | 100-277V | 1610-1820LM | D1.0 " x35.8 " | 11.3oZ |
| 18W | 100-277V | 2070-2340LM | D1.0 " x47.8 " | 11.3oZ |
| 20W | 100-277V | 2300-3600LM | D1.0 " x47.8 " | 11.3oZ |
| 22W | 100-277V | 2530-2860LM | D1.0 " x47.8 " | 14.5oZ |
| 18W-TPE | 100-277V | 2070-2340LM | D1.0 " x47.8 " | 14.8oZ |
| 36W-ED | 100-277V | 4140-4680LM | D1.0 " x47.8 " | 25.0oZ |
| 44W-ED | 100-277V | 5060-5720LM | D1.0 " x47.8 " | 28.6oZ |
| 18W-BC | 100-277V | 2070-2340LM | D1.0 " x47.8 " | 14.5oZ |
| 22W-BC | 100-277V | 2530-2860LM | D1.0 " x47.8 " | 14.8oZ |

LED Tri-proof

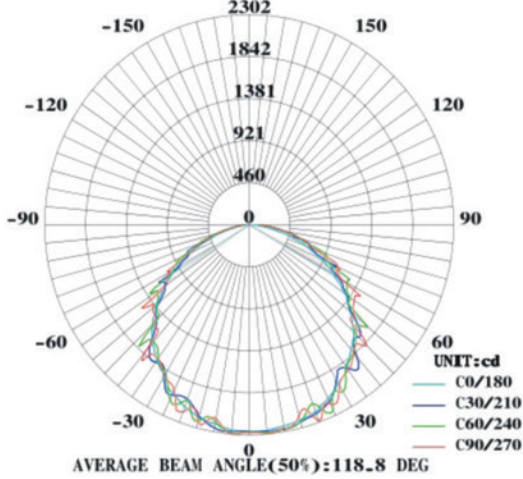


For purchase and optional installation, contact us at
www.DeYoungElectric.com

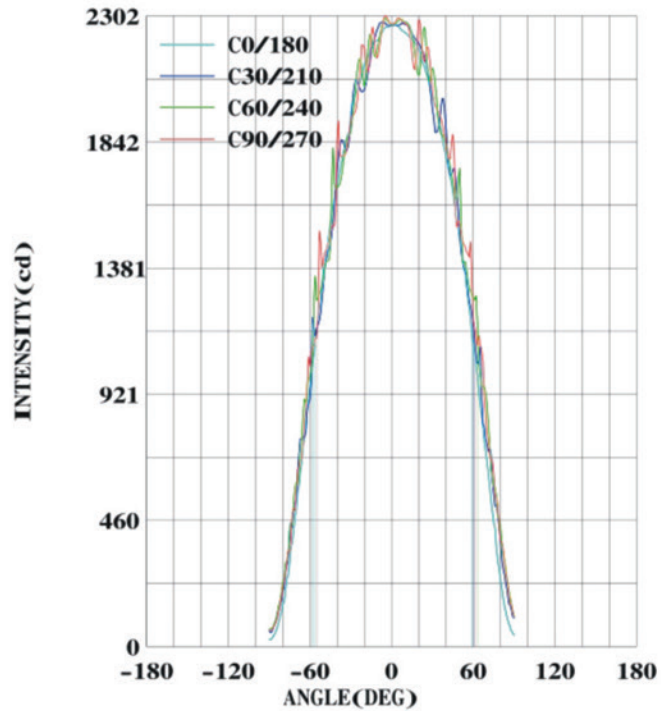


PHOTOMETRICS

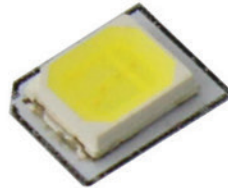
LUMINOUS INTENSITY DISTRIBUTION



LUMINOUS INTENSITY DISTRIBUTION



Internal driver



Epistar 2835 Chip>130LM/W



Speical Aluminum Heat fins

TECHNICAL SPECIFICATIONS

| Watts | Input Voltage | Mean Lumens | Size (L*W*H) | Net Weight |
|-------|---------------|-------------|----------------------|------------|
| 30W | 100-277V | 2700-3000LM | 23.6 " x3.5 " x3.0 " | 70.5oZ |
| 45W | 100-277V | 4050-4500LM | 47.2 " x3.5 " x3.0 " | 105.8oZ |
| 60W | 100-277V | 5400-6000LM | 59.1 " x3.5 " x3.0 " | 141.0oZ |

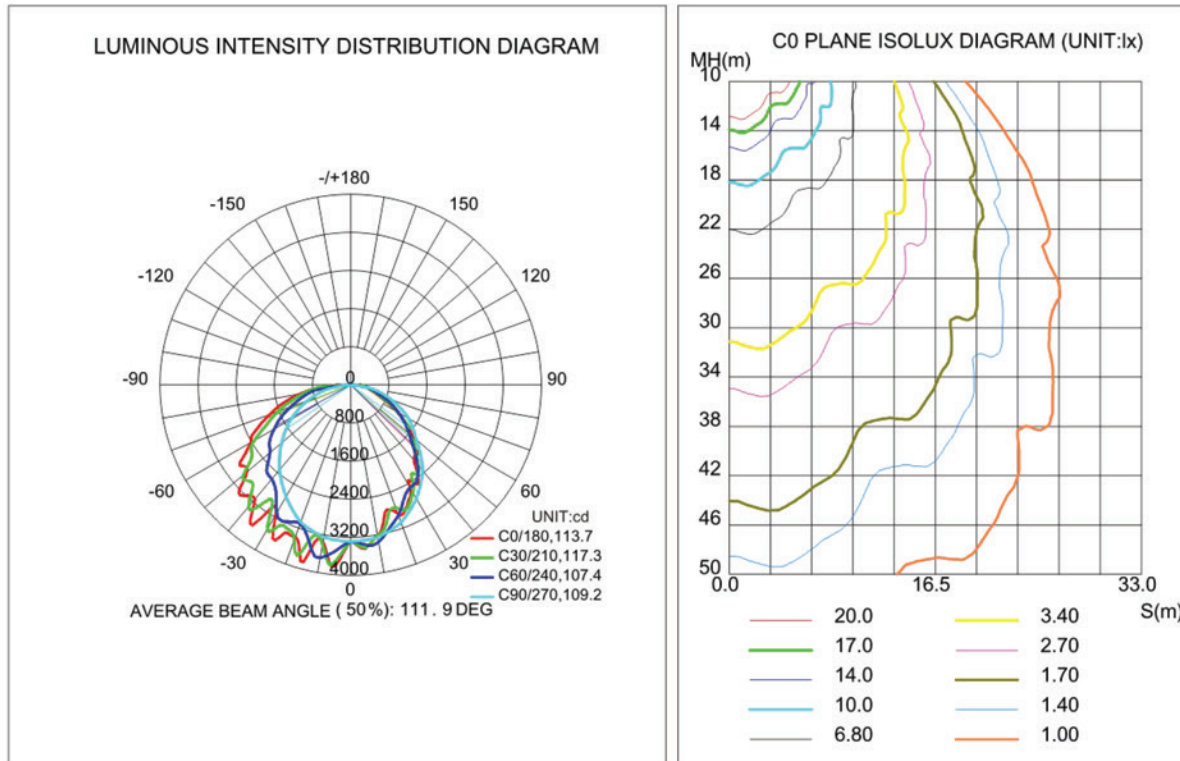
LED Wall pack



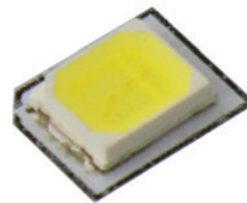
For purchase and optional installation, contact us at
www.DeYoungElectric.com



PHOTOMETRICS



Mean Well Driver



Epistar SMD 2835



internal structure

TECHNICAL SPECIFICATIONS

| Watts | Input Voltage | Mean Lumens | Size (L*W*H) | Net Weight |
|------------|---------------|---------------|-------------------------|------------|
| 50W-A1 | 100-277V | 4050-4500LM | 10.8 " x 10.6 " x 7.1 " | 98.7oZ |
| 60W-A1 | 100-277V | 5400-6000LM | 13.2 " x 9.8 " x 7.9 " | 158.6oZ |
| 80W-A1 | 100-277V | 7200-8000LM | 13.2 " x 9.8 " x 7.9 " | 158.6oZ |
| 80W-A1-HV | 180-520V | 7200-8000LM | 13.2 " x 9.8 " x 7.9 " | 158.6oZ |
| 100W-A1 | 100-277V | 9000-10000LM | 17.8 " x 9.8 " x 9.4 " | 236.2oZ |
| 120W-A1 | 100-277V | 10800-12000LM | 17.8 " x 9.8 " x 9.4 " | 264.4oZ |
| 120W-A1-HV | 180-520V | 10800-12000LM | 17.8 " x 9.8 " x 9.4 " | 264.4oZ |
| 100W-A2 | 100-277V | 9000-10000LM | 14.2 " x 9.1 " x 11.4 " | 169.2oZ |
| 120W-A2 | 100-277V | 10800-12000LM | 18.2 " x 9.1 " x 13.8 " | 246.8oZ |
| 150W-A2 | 100-277V | 13500-15000LM | 18.2 " x 9.1 " x 13.8 " | 250.3oZ |

Dusk-Dawn LED Wall Pack



For purchase and optional installation, contact us at
www.DeYoungElectric.com



Product Details

Light Source: LED Item Type: Outdoor Wall Lights

LED Light Source: SMD 3030

Input Voltage(V): AC80-240V / AC277V

Lamp Power(W): 10 Lamp Luminous

Flux(lm): 2400 Lamp Luminous

Efficiency(lm/w): 80 CRI (Ra>): 85

Color Temperature(CCT): warm / natural / cool white

Beam Angle(°): 180 Working Temperature(C): -35 - 55

Working Lifetime(Hour): 50.000

Lamp Body Material: Aluminum Alloy

IP Rating: IP54 Certification: CE, EMC, ETL, RoHS, UL

Place of Origin: Guangdong, China (Mainland)

LED chip: SMD 3030

Philip Material: Aluminum alloy

Driver: UL Meanwell driver Power factor: > 0.9 THD: < 20%

Dimension: 173x273x133 mm

Weight: 1.6 kg Certificates: ETL LM80 Lens: PC / Glass

Wattages and Size Options

| | |
|---------------------|-------------|
| LED flood light | 10w to 200w |
| LED wall pack light | 10w to 100w |
| LED canopy light | 20w to 100w |
| LED e40 bulb light | 20w to 100w |
| LED down light | 9w to 36w |
| LED Spot light | 3w to 9w |
| LED tube light | 9w to 27w |

